

# Screening women for abdominal aortic aneurysm

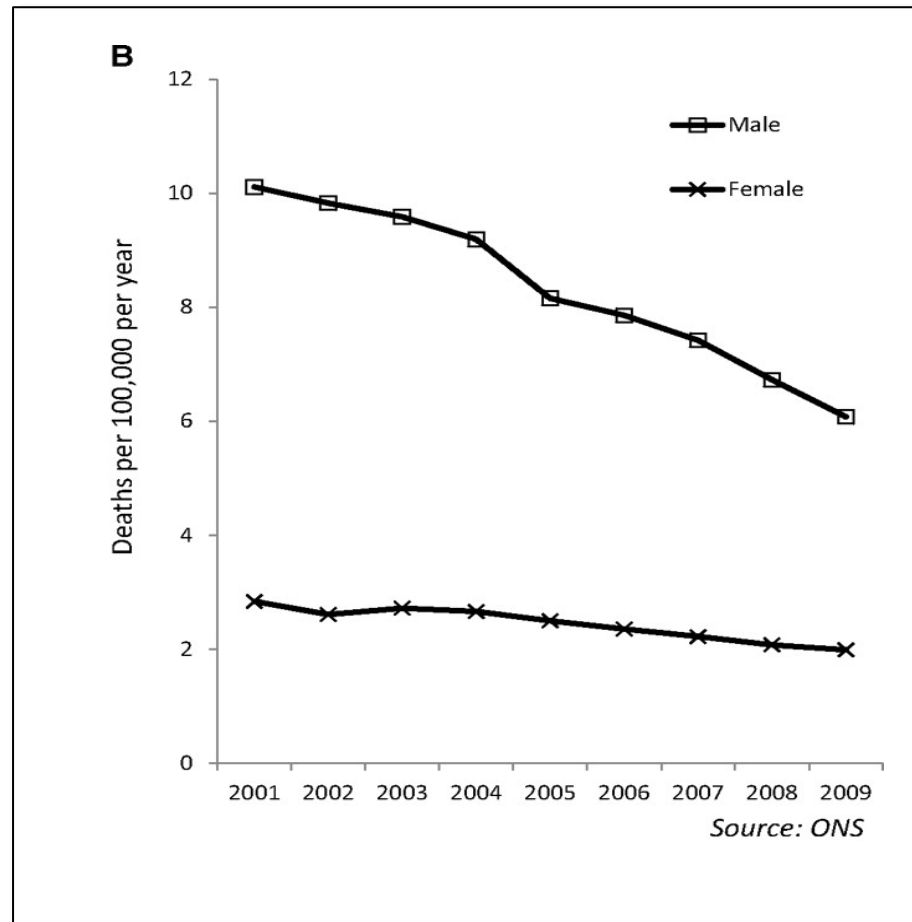
Matt Bown

# Disclosure

This study project was funded by the NIHR Research for Patient Benefit programme award PB-PG-0215-36027 and the NIHR Leicester Biomedical Research Centre. The views expressed are those of the author(s) and not necessarily those of the NIHR or the Department of Health and Social Care.

# Background

# Background: History



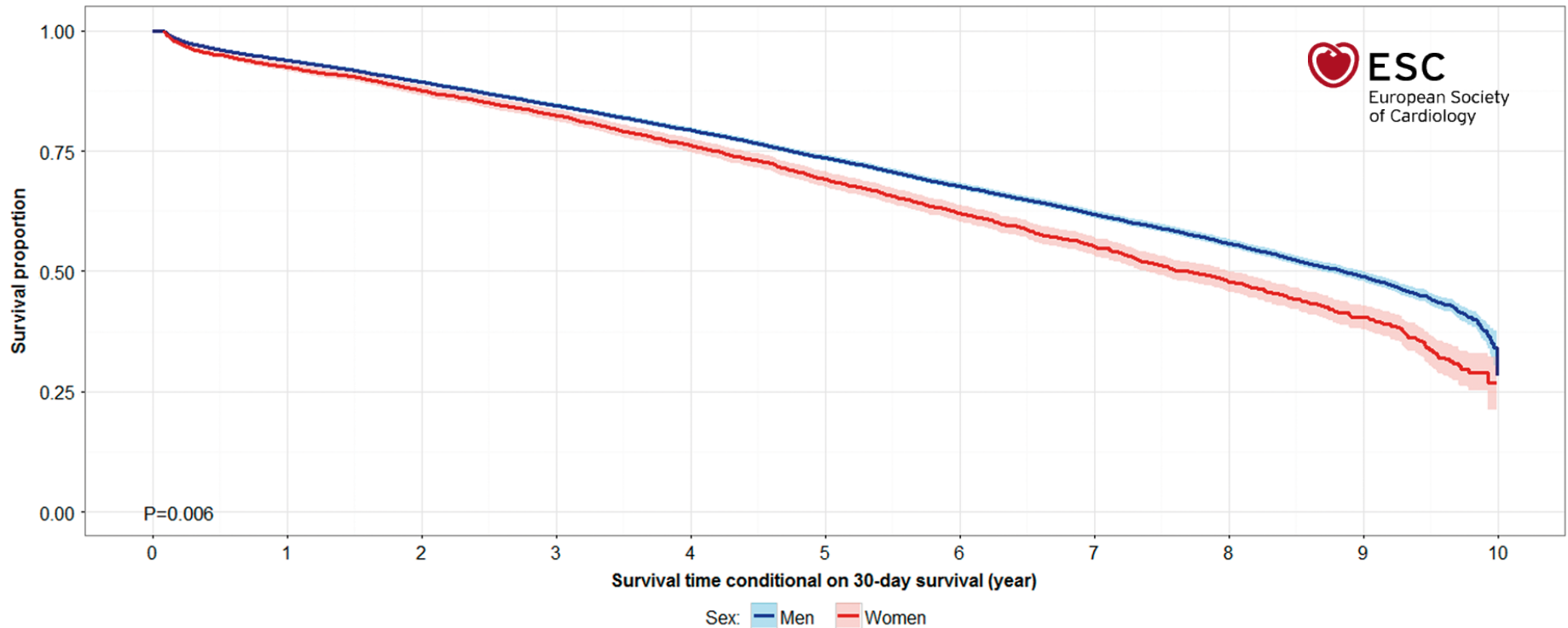
# Background: History

Mortality	Open repair group (%)			EVAR group (%)		
	Women	Men	P-value	Women	Men	P-value
30 days	6.65	4.52	<0.001	2.70	1.52	<0.001
1 year	8.07	5.83	<0.001	3.93	2.25	<0.001
5 years (excluding 30 days)	10.16	6.66	<0.001	4.86	2.91	<0.001

*European Heart Journal*, Volume 37, Issue 46, 7 December 2016, Pages 3452–3460, <https://doi.org/10.1093/eurheartj/ehw335>

The content of this slide may be subject to copyright: please see the slide notes for details.

# Background: History



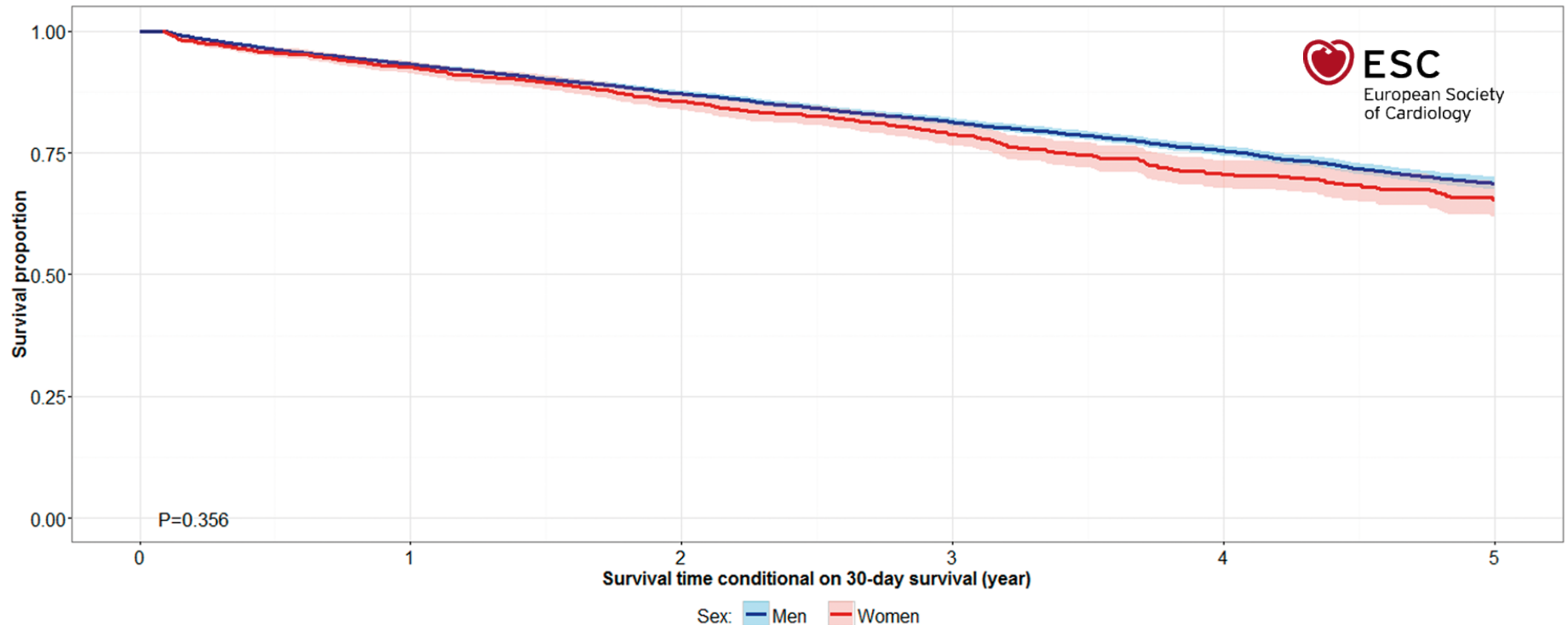
## Survival after open repair, conditional on 30-day survival

*European Heart Journal*, Volume 37, Issue 46, 7 December 2016, Pages 3452–3460, <https://doi.org/10.1093/eurheartj/ehw335>

The content of this slide may be subject to copyright: please see the slide notes for details.

OXFORD  
UNIVERSITY PRESS

# Background: History



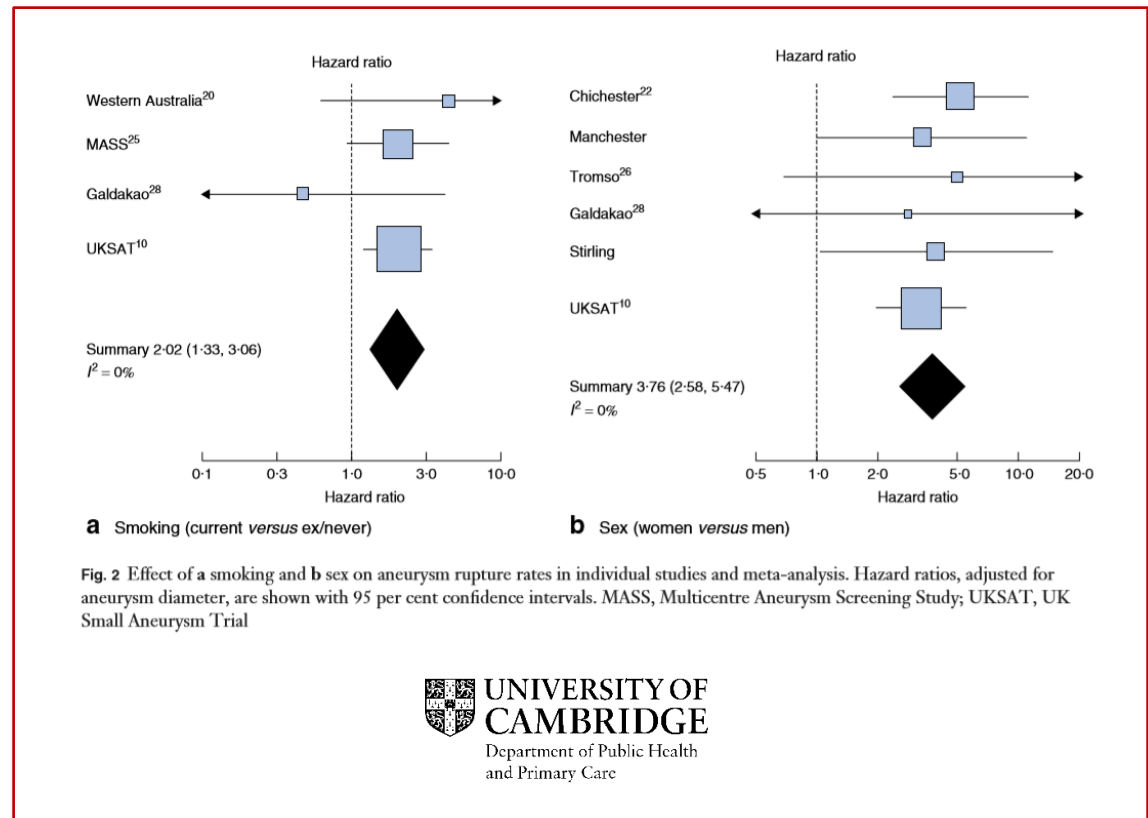
## Survival after **EVAR**, conditional on 30-day survival

*European Heart Journal*, Volume 37, Issue 46, 7 December 2016, Pages 3452–3460, <https://doi.org/10.1093/eurheartj/ehw335>

The content of this slide may be subject to copyright: please see the slide notes for details.

# Other work in the area:

- RESCAN  
4x rupture risk





# Female Aneurysm Screening sTudy (FAST)

- Will women attend for screening?
- What is the prevalence of AAA in high-risk women?

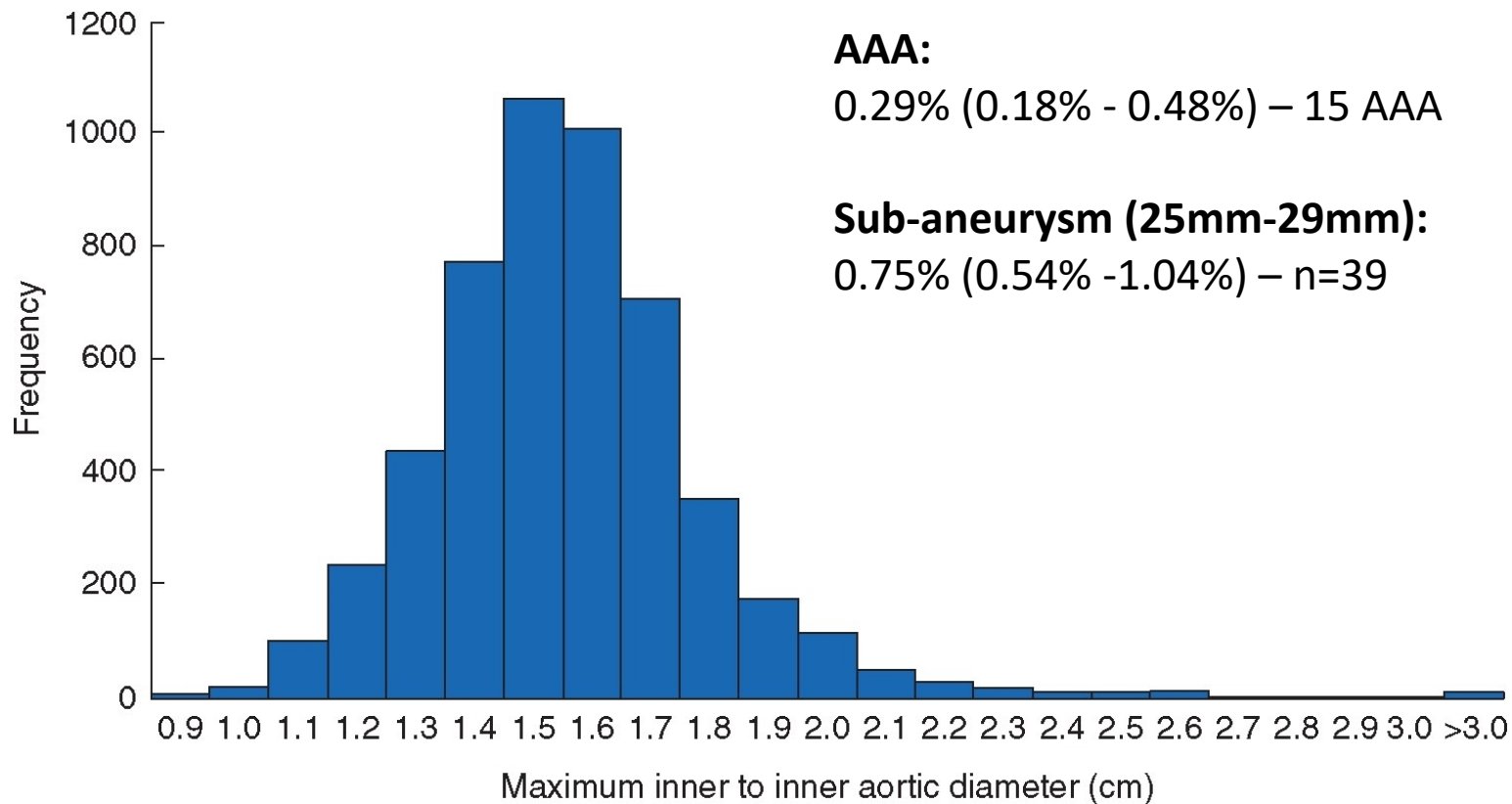
# Methods

- Replicated NAAASP screening
- Women aged 65-74
- High risk definition:
  - Ex or current smoker
  - History of coronary artery disease

## Results: Attendance:

	Invited	Attended
• Overall	5998	5,200 (86.7%)
– Ex-smokers:	3709	3386 (91.3%)
– Current smokers:	1762	1323 (75.1%)
– CAD:	527	492 (93.4%)

# Results: Prevalence



# Results: Prevalence

## Invitation

- Ex-smokers: 0.18% (0.08%-0.39%)
- Current smokers: 0.69% (0.36%-1.31%)

# Results: Prevalence

	Invitation	Actual
• Ex-smokers:	0.18% (0.08%-0.39%)	0.24% (0.11%-0.49%)
• Current smokers:	0.69% (0.36%-1.31%)	0.83% (0.34%-1.89%)

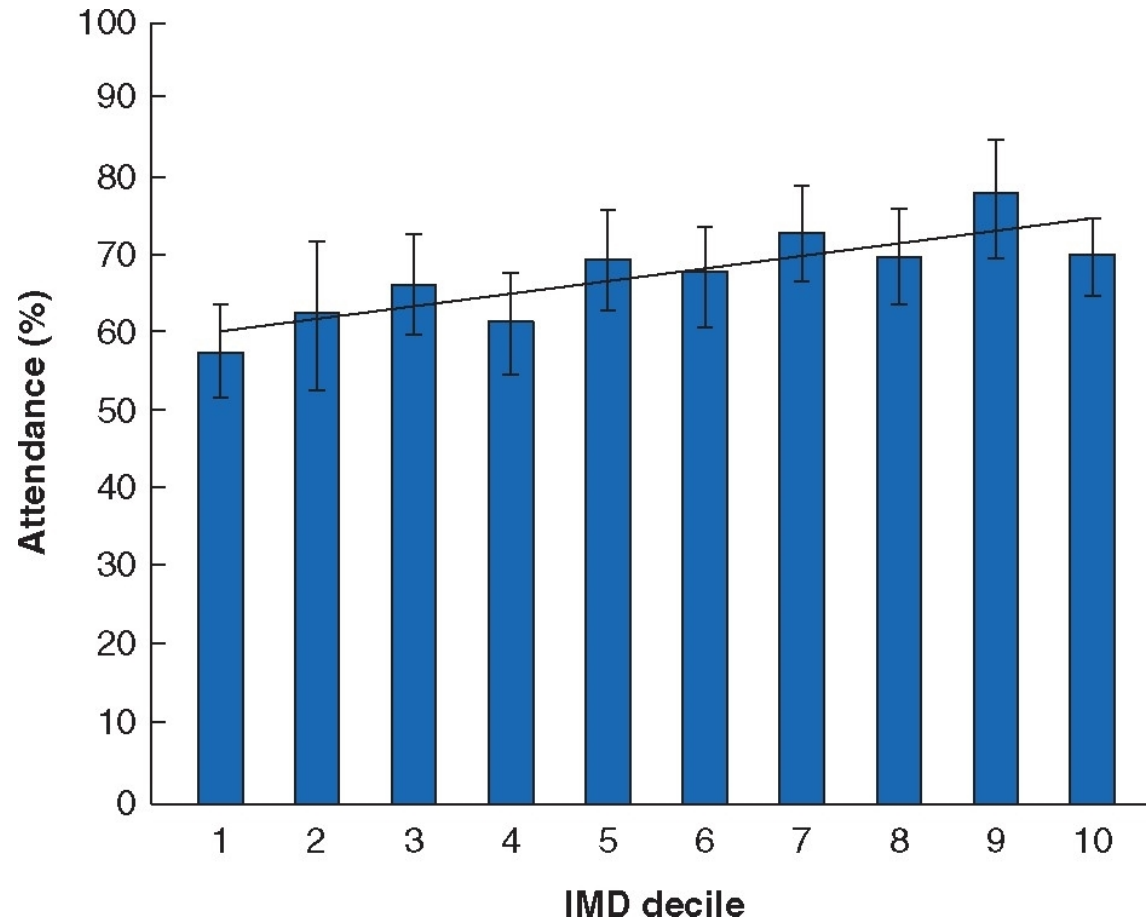
# Results: Prevalence

	Invitation	Actual
• Ex-smokers:	0.18% (0.08%-0.39%)	0.24% (0.11%-0.49%)
• Current smokers:	0.69% (0.36%-1.31%)	0.83% (0.34%-1.89%)

## Other categorisation

- CAD: 0.52% (0.14%-1.64%)
- Ever smokers: 0.35% (0.20%-0.60%)

# Interesting observation:

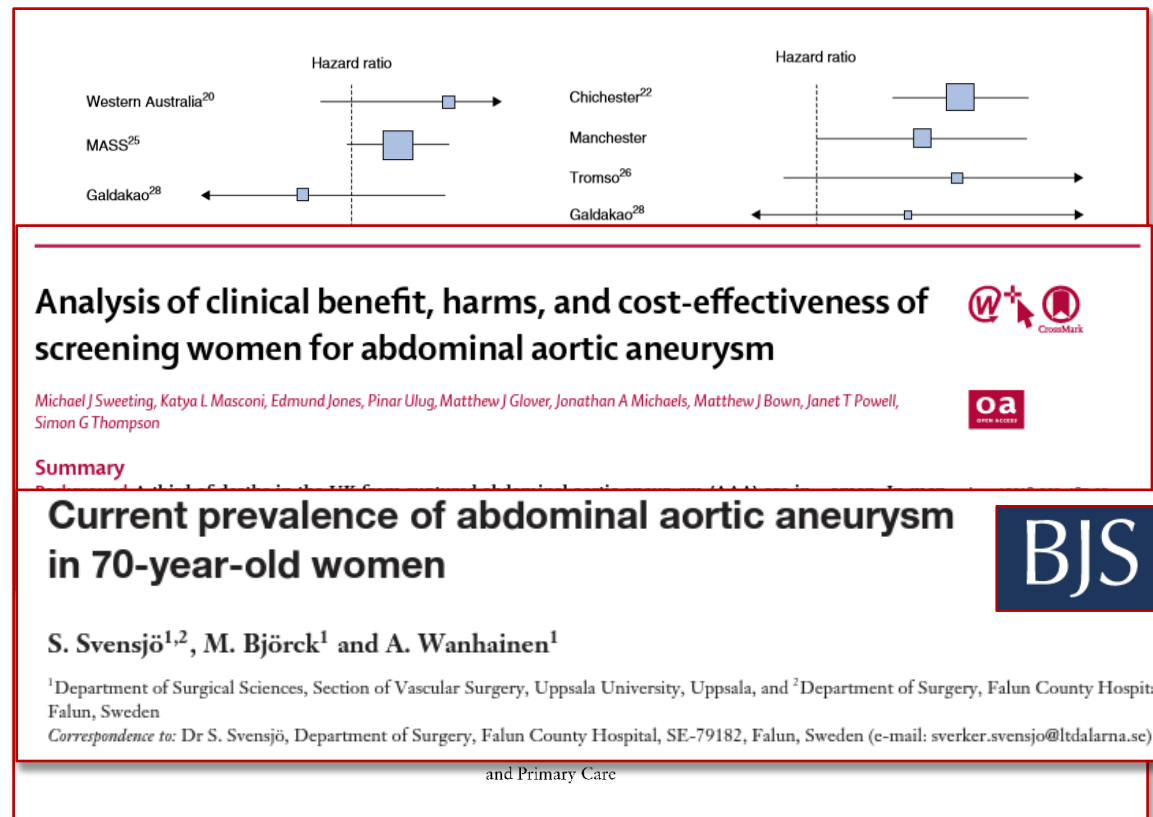




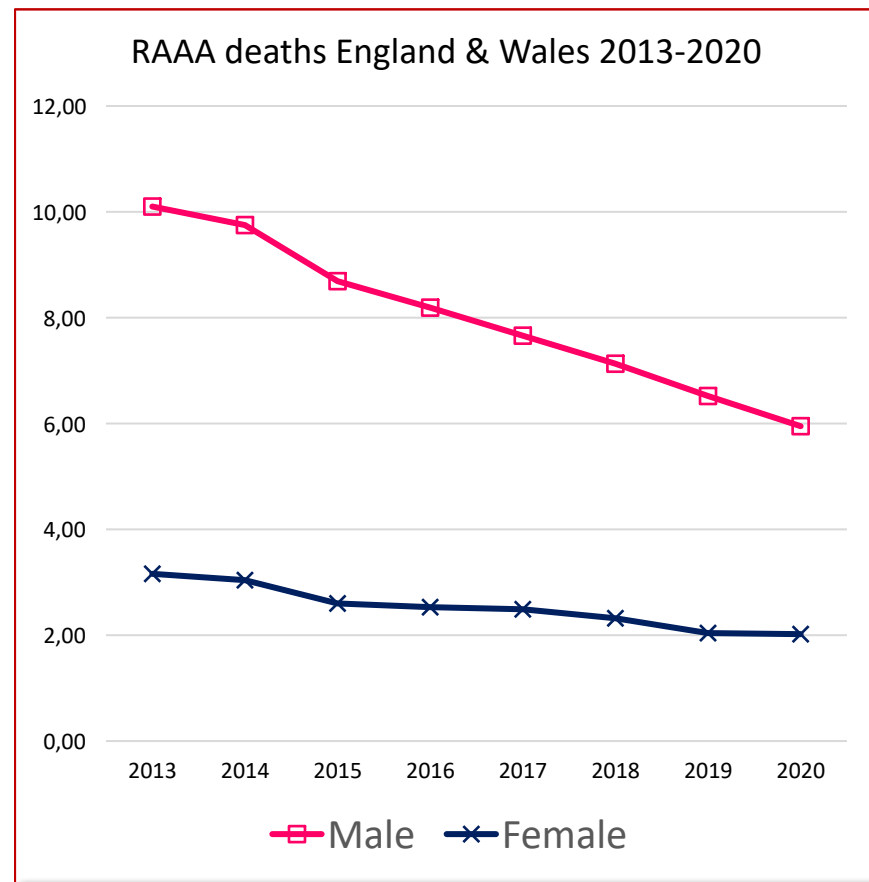
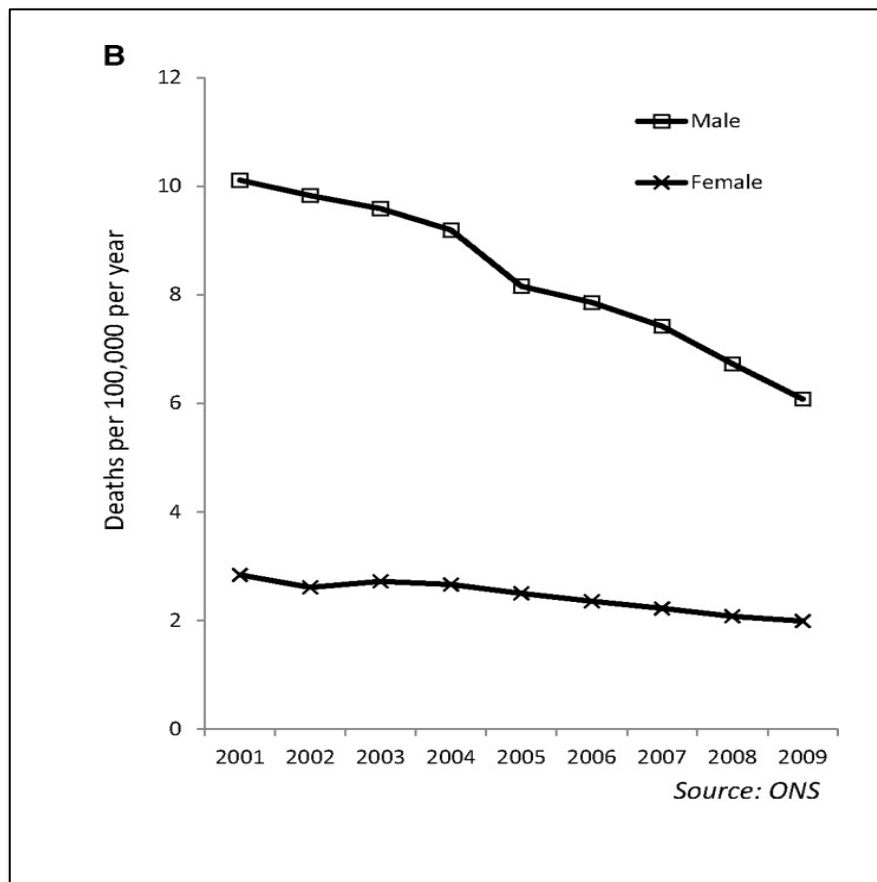
# Conclusion

# Other work in the area:

- RESCAN  
4x rupture risk
- SWAN  
£/€ ineffective
- Svensjo et al.  
0.4%



# Discussion



# Acknowledgements:

- FAST team: Andrew Duncan; Caroline Maslen; Camilla Gibson; Tim Hartshorne; Azhar Farooqi; Athanasios Saratzis.