

Clinical Characteristics, Incidences, and Mortality Rates for Aortic Dissections Type A and B:

A Nationwide Danish Population-based Cohort Study from 1996 to 2016



70TH ESCVS CONGRESS & 7TH IMAD MEETING

20 | 23 JUNE 2022



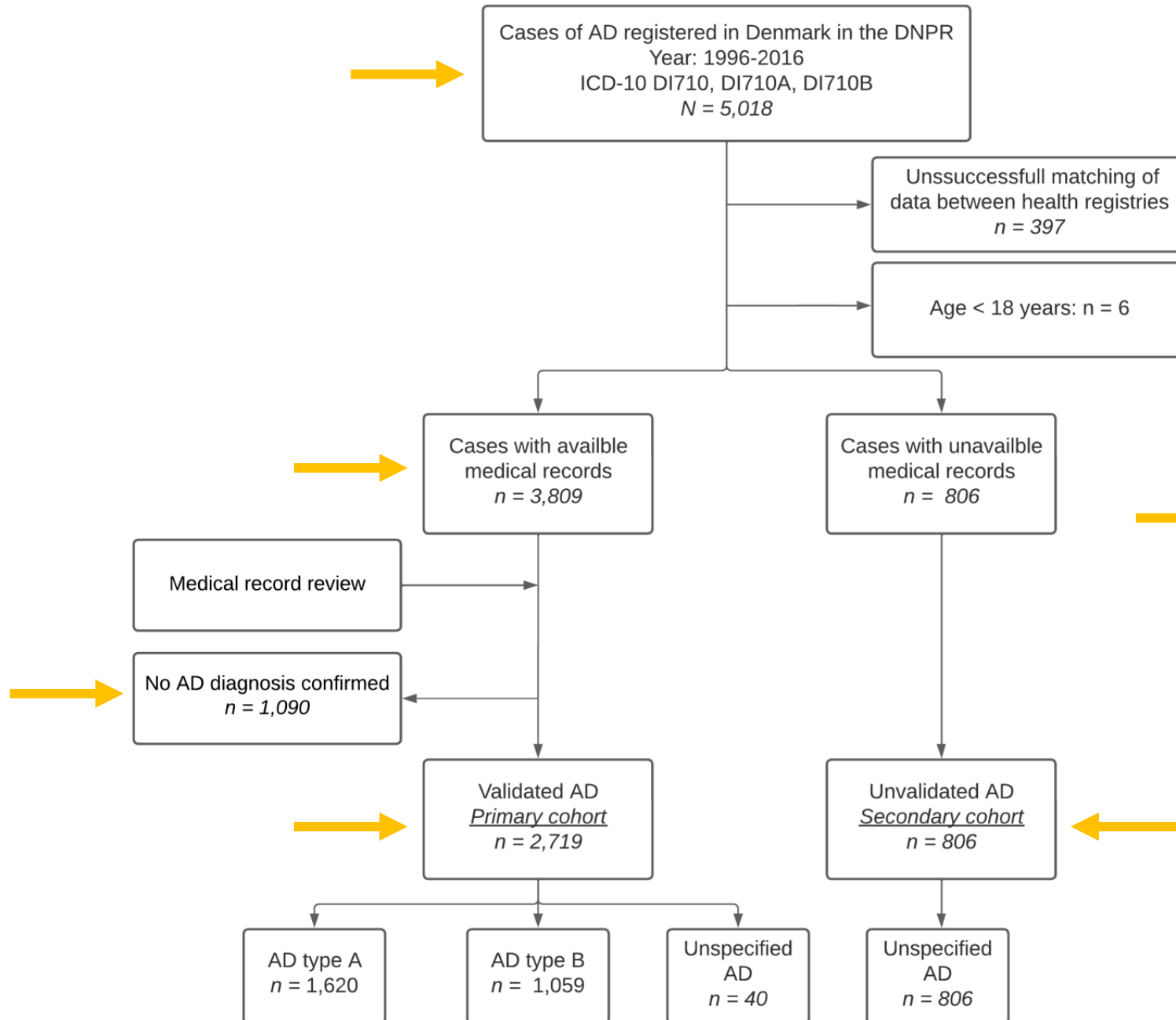
Lasse M. Obel, MD, Ph.D-stud, DEPARTMENT OF VASCULAR SURGERY, ODENSE UNIVERSITY HOSPITAL, DENMARK

On behalf of: Jes S. Lindholt, Anne N. Lasota, Henrik K. Jensen, Leila L. Benhassen, Amalie L. Mørkved, Reshaabi Srinantholgen, Malina Christiansen, Henning Bundgaard, and Mads Liisberg

Disclosures

✓ Nothing to declare

Methods



The creation of the study populations

Control group:
Validated cases of AD matched 1:10 on age and sex with the general hypertonic population

Results

Baseline characteristics (selected):

	AD type A	AD type B
N (2,719)	1,620 (59.6%)	1,059 (38.9%)
Sex (male)	1,094 (67.0%)	710 (67.5%)
Age at diagnosis	63.5 (\pm 12.9)	67.5 (\pm 12.2)

Results

Incidences:

Overall mean: 4.2/100,000

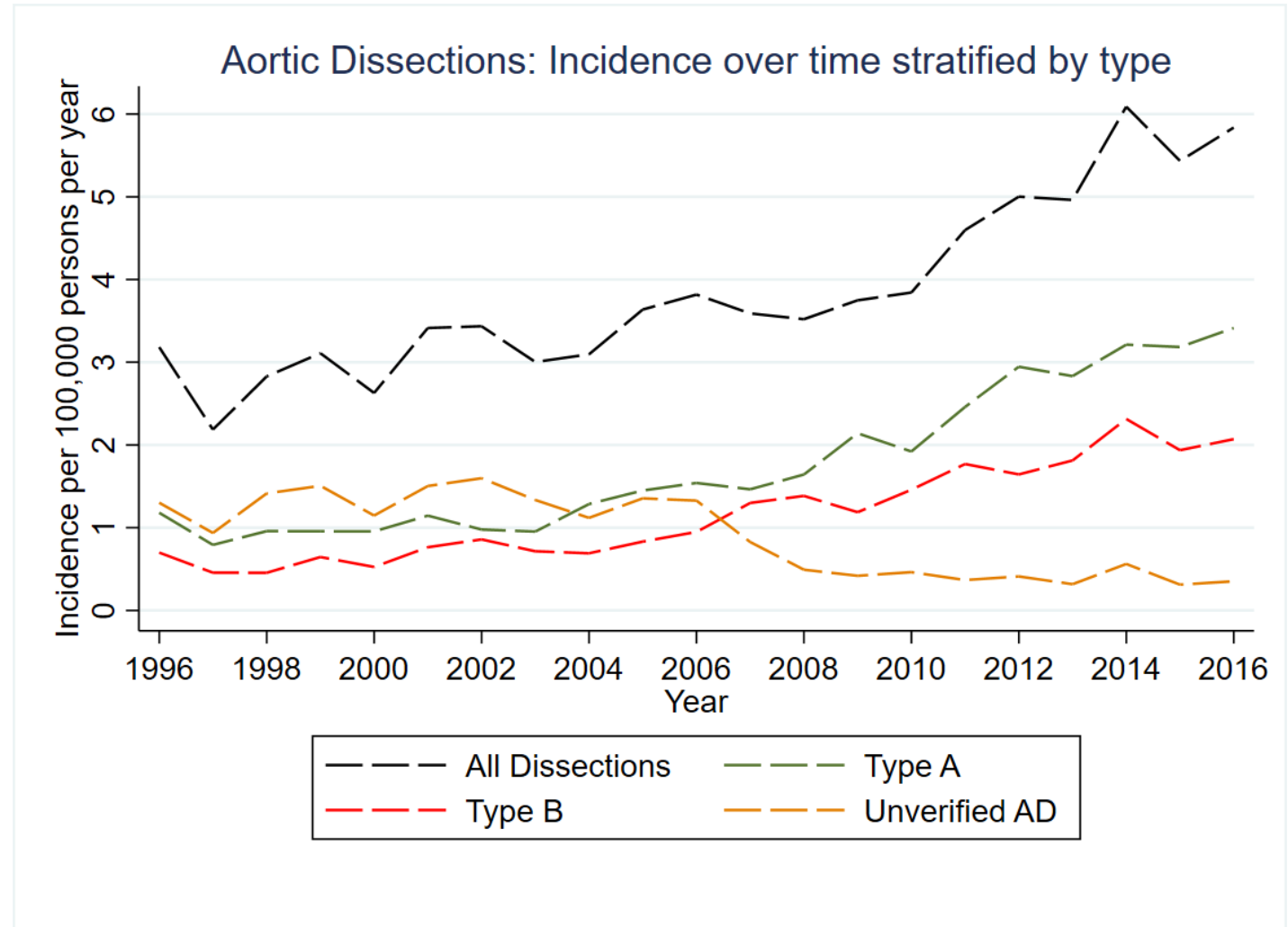
1996-2000: 2.9/100,000

2011 to 2016: 5.4/100,000

P<0.001

Type A mean incidence: 2.2/100,000

Type B mean incidence: 1.5/100,000



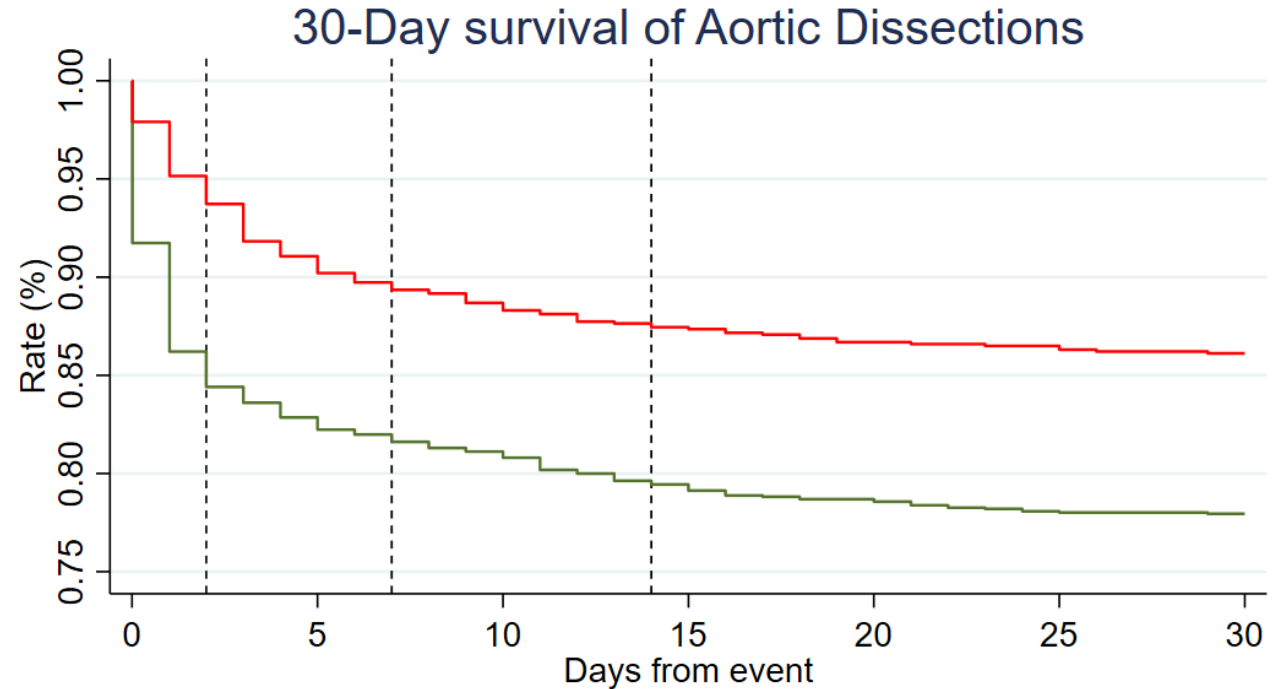
30-day mortality rates

Type A: 22.1%

Type B: 13.9%

No significant changes over time

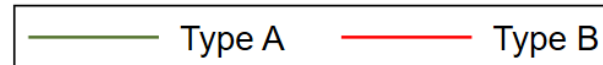
No significant difference between sex



Number at risk

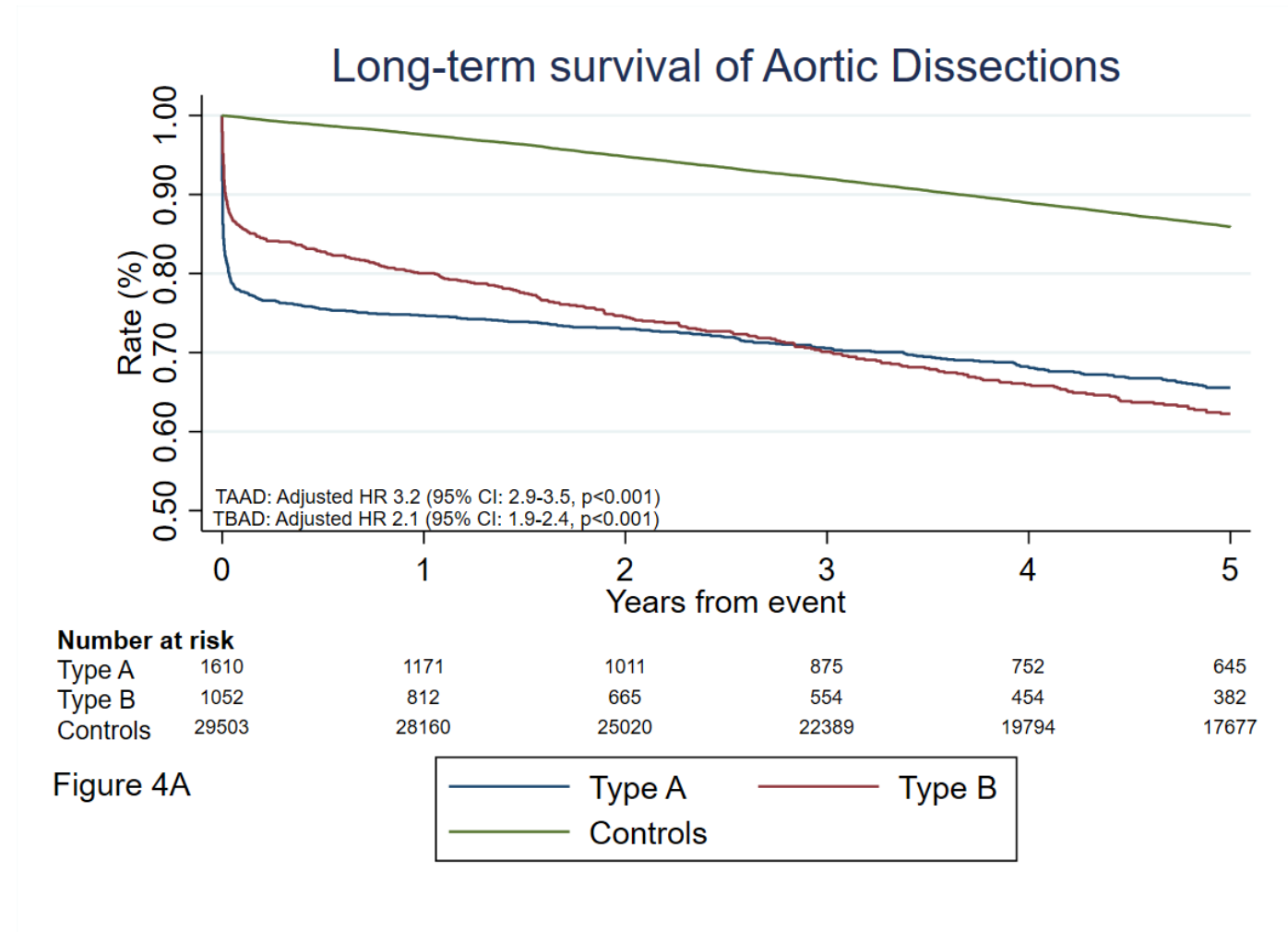
Type A	1610	1306	1267	1255
Type B	1052	933	910	903

Figure 3A



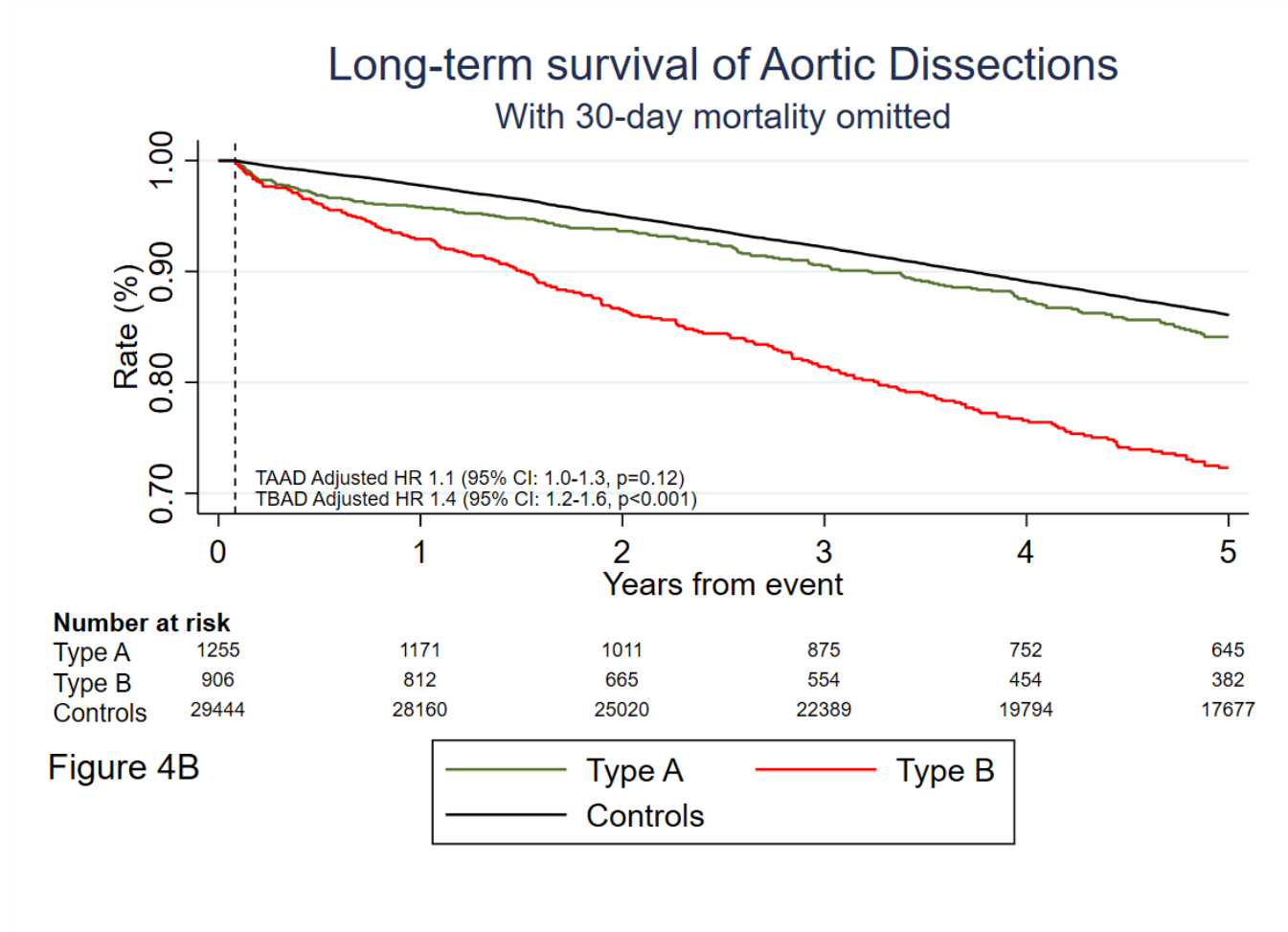
5-year all cause mortality rates

- Adjusted* hazard ratios:
- AD type A: 3.2 (2.9-3.5, $p < 0.001$)
- AD type B: 2.1 (1.9-2.4, $p < 0.001$)
- *Adjusted for sex, age, time-period, and relevant co-morbidities



5-year all cause mortality rates (30-day mortality omitted)

- Adjusted* hazard ratios:
- AD type A: 1.1 (1.0-1.3, p=0.12)
- AD type B: 1.4 (1.2-1.6, p<0.001)
- *Adjusted for sex, age, time-period, and relevant co-morbidities



Conclusions

Aortic dissection type A was almost twice as frequent as type B.

Thanks to...

Odense University Hospital

Mads Liisberg

Jes S Lindholt

Aalborg University Hospital

Anne N. Lasota

Aarhus University Hospital

Henrik K. Jensen

Leila L. Benhassen

Amalie L. Kristensen

Reshaabi Srinantholgen

University of Copenhagen (The Heart Center)

Malina Christiansen

Henning Bundgaard

Financial support

This study was supported by the University of Southern Denmark, the Helse foundation, The Danish Heart Foundation, and the Region of Southern Denmark

